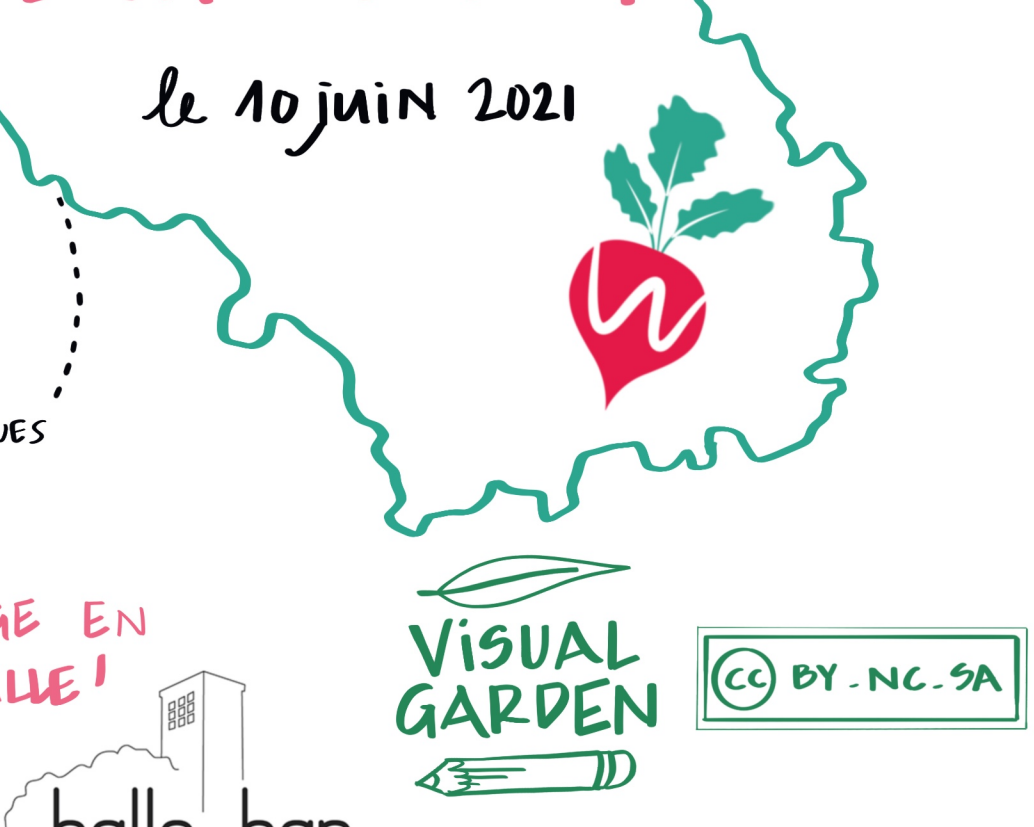
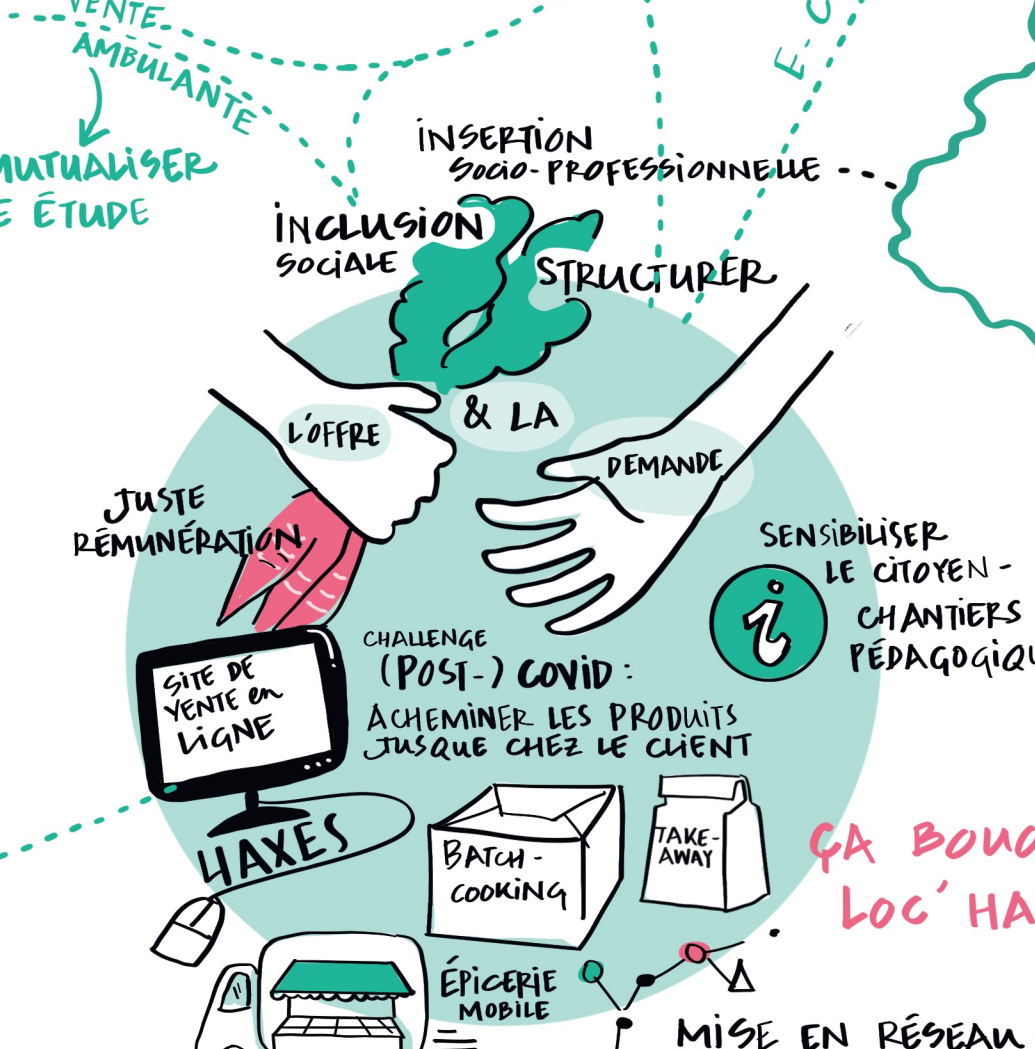
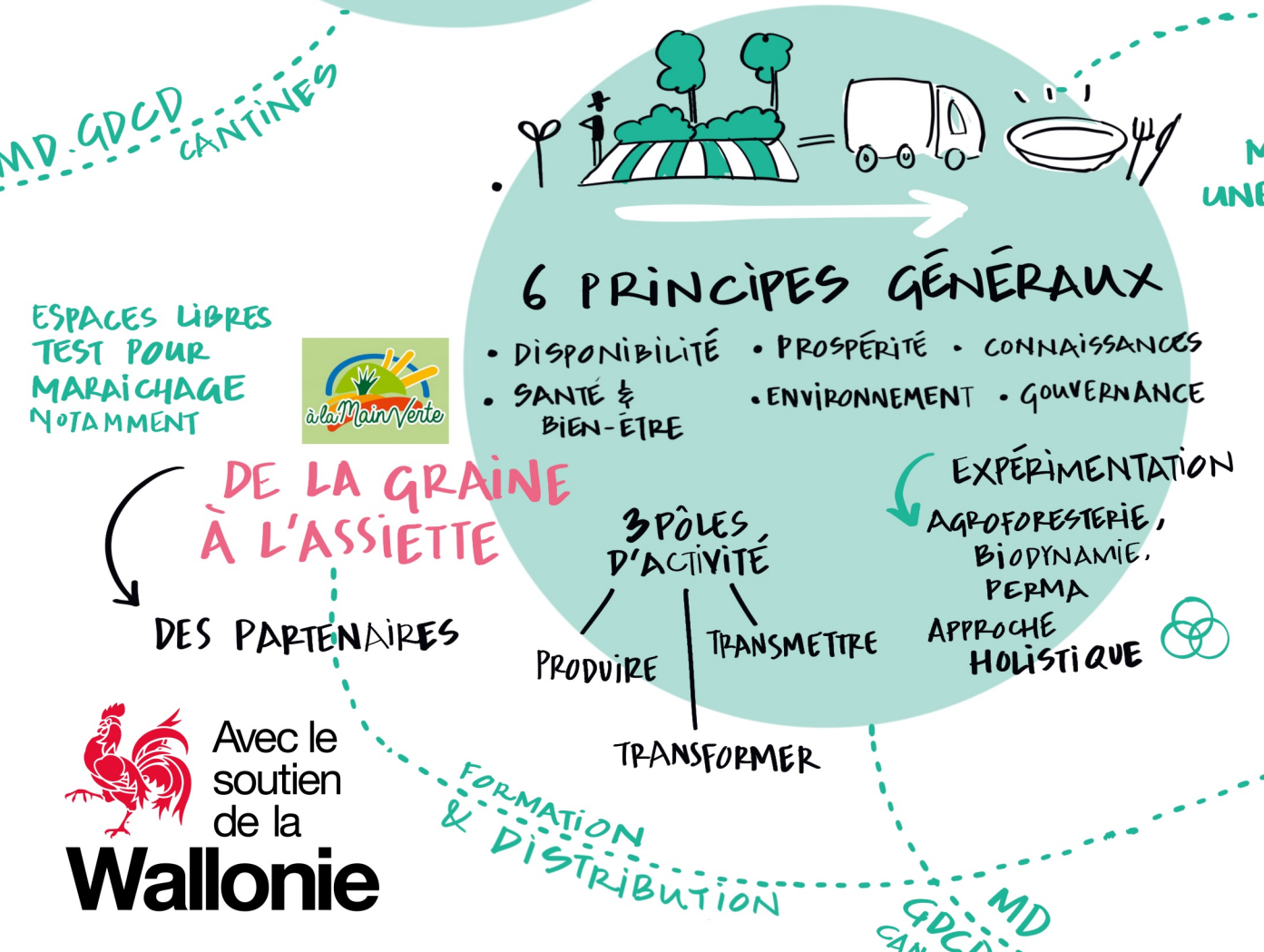
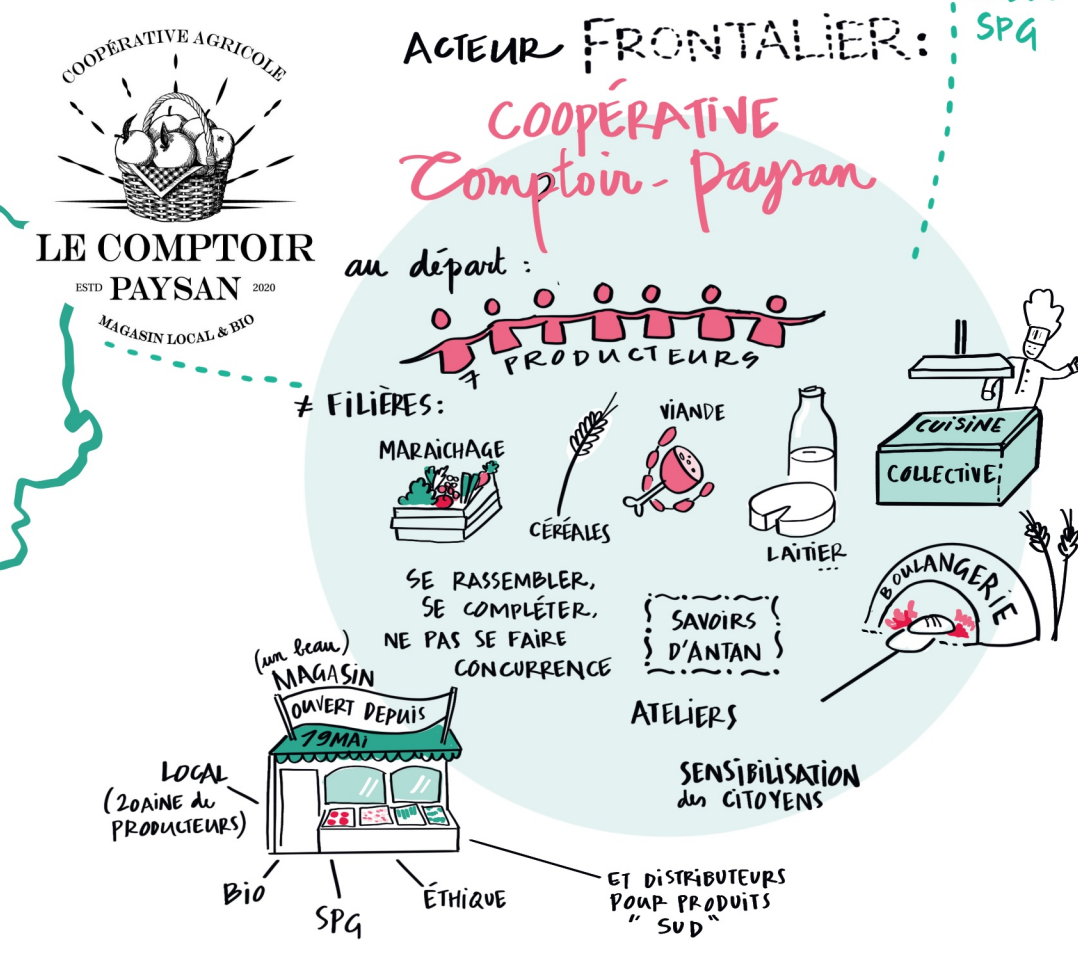
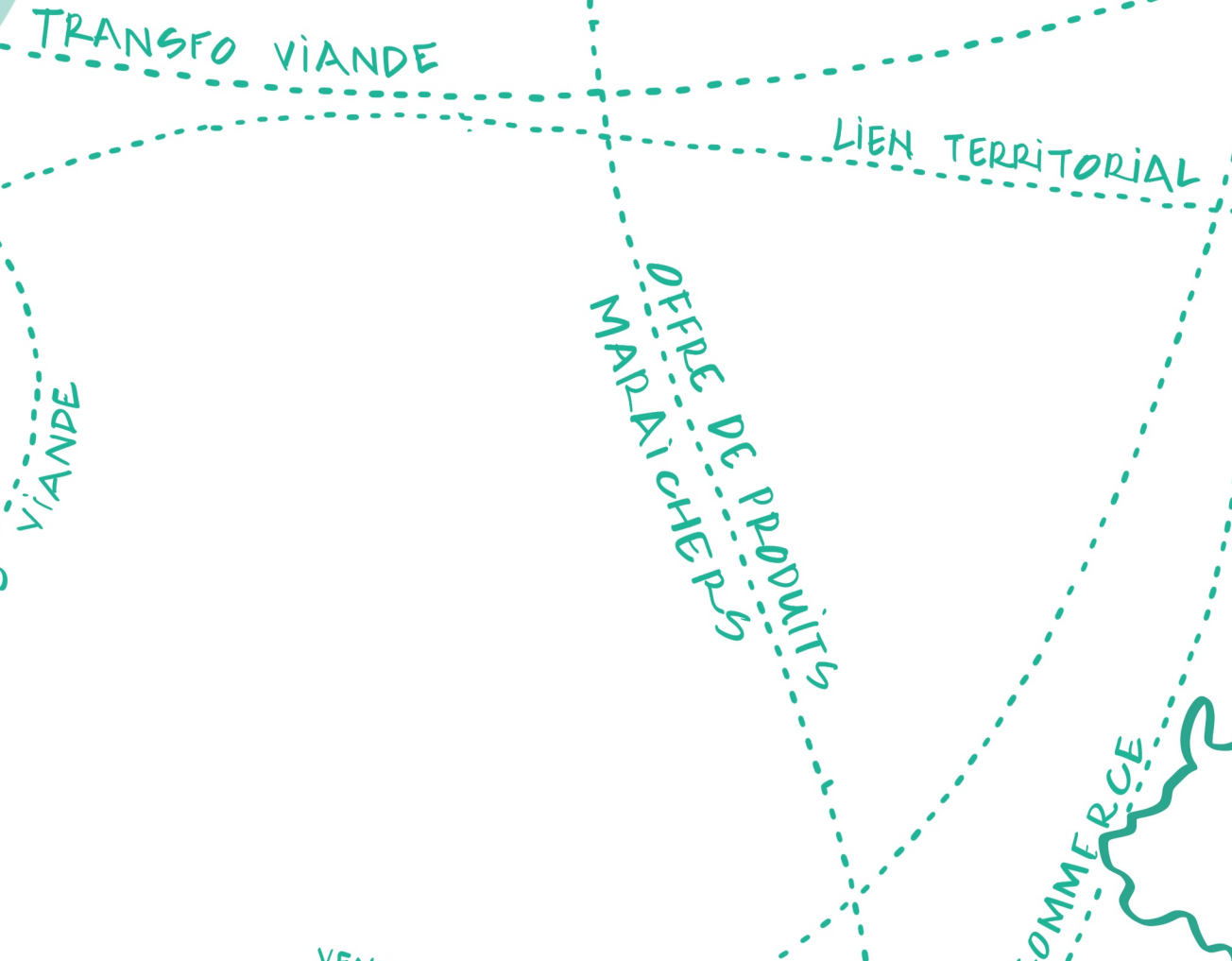
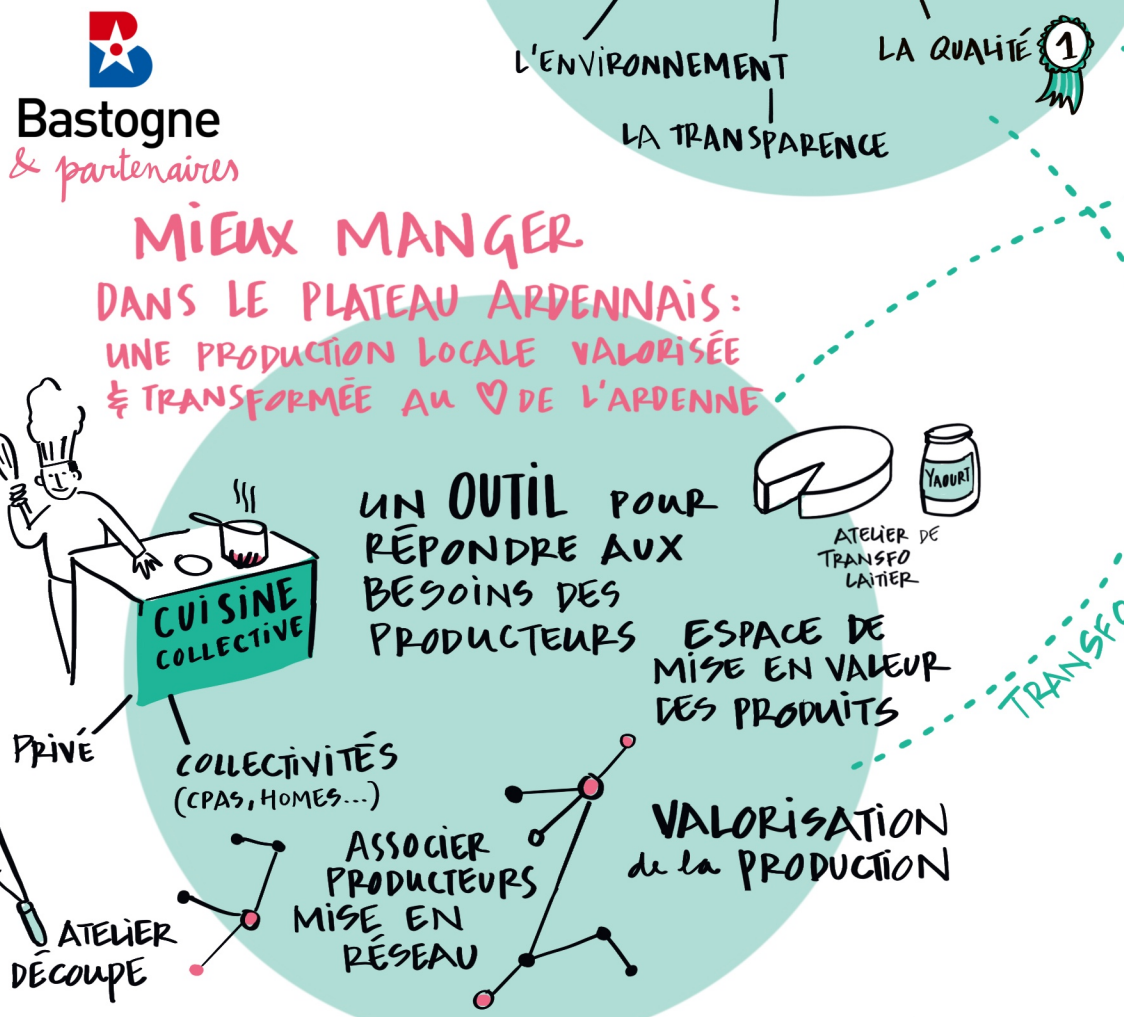
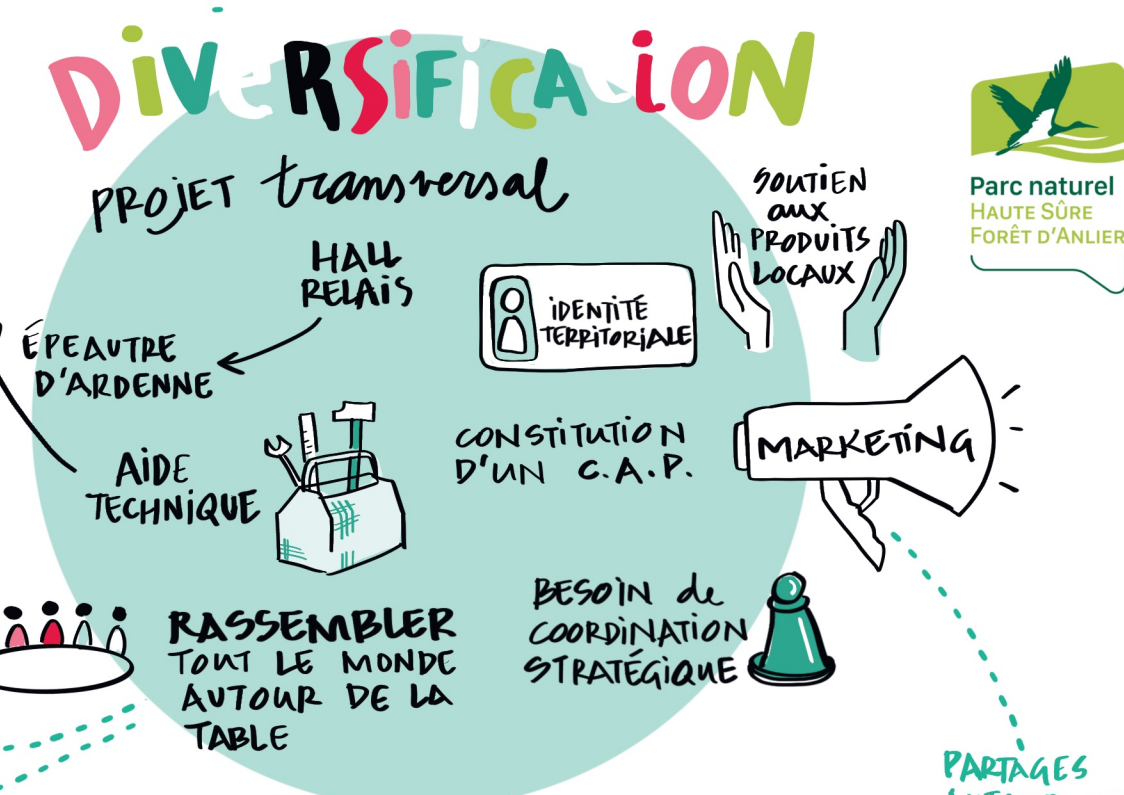
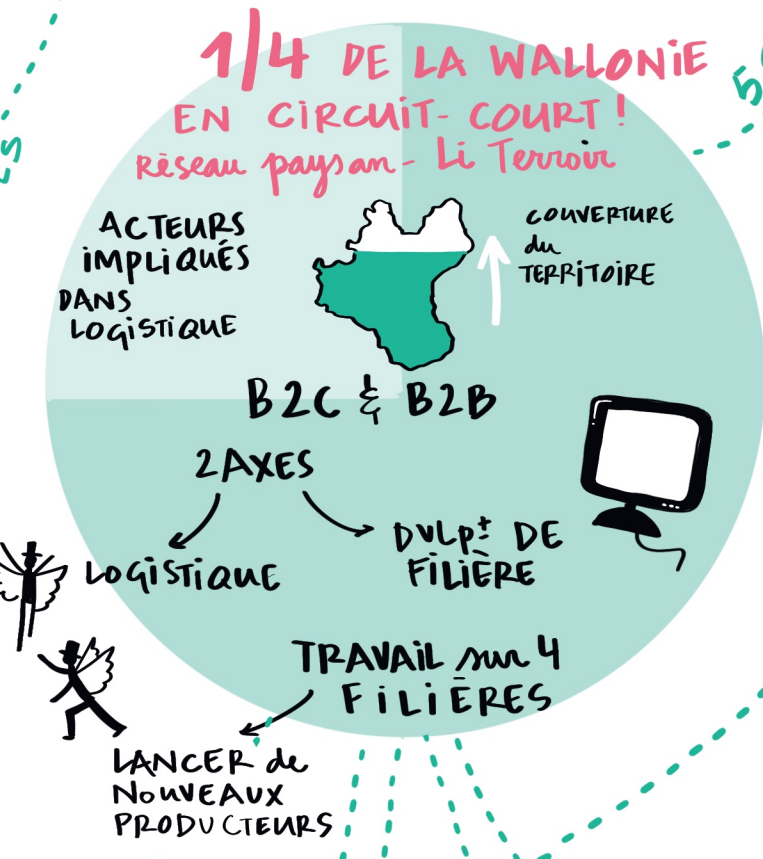
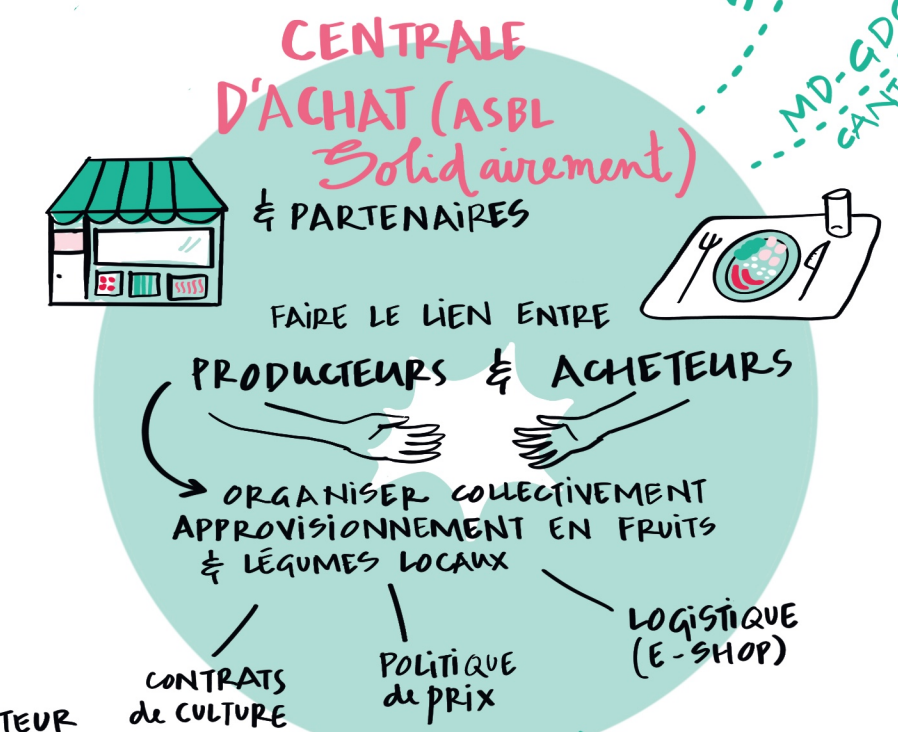
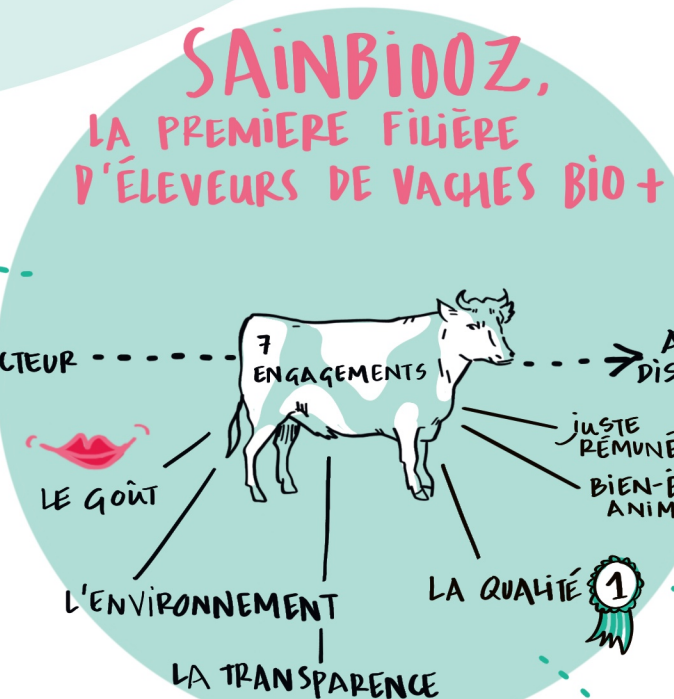


ON SE CONNAÎT TOUS!  
 TROUVONS des COMPLÉMENTARITÉS  
 DES LIENS DÉJÀ EXISTANTS!  
 DE NOUVEAUX ACTEURS SE METTENT EN PLACE!  
 ON A TOUS LE MÊME OBJECTIF! UNISSONS-NOUS POUR L'ATTEINDRE!  
 RÉSEAU 5C



- ### ÉLÉMENTS CLÉS de la PROVINCE:
- RURALE (64,3 HAB/KM<sup>2</sup>)
  - ↳ 30% AGRICOLE
  - 7 PÔLES URBAINS
  - PRÉSENCE de G.A.L. / PN
  - 34 CANTINES (5.500 REPAS CHAUDS) ↳ OPPORTUNITÉ!
  - 7 PROJETS de HALLS RELAIS (lait, céréales, viande, horticulture...)